



GRAYONE

S/Y GRAYONE

# S/Y GRAYONE

GRAYONE is a very fashionable dark grey hull color highlighting her gorgeous exterior lines and the enormous deck area covering the three teak decks. The formal dining area is located to port, while a luxurious sofa and matching drop-down table are located in the centre area, beneath the port windows. The opposite side features a comfy L-shaped sofa accompanied by coffee tables, armchairs, and footstools, all of which can be used as extra gathering and resting spaces. In contrast to the traditional nautical decor found on other luxury yachts of a comparable size, the interior of this one features a light ceiling and floors, dark blue and white tones, and a warm, welcome soft orange utilized in part for the materials.

The GRAYONE luxury catamaran's clever internal layout allows for a front bar complete with a wine cellar to serve guests both inside the boat and on the foredeck. Guests will have a hard time deciding between the aft cockpit, the spacious flybridge, and the upper deck, which features two loungers, integrated seating with breathtaking views of the water, and a cocktail table.



# OUTDOOR AREAS











VALLETTA

# INDOOR AREAS












# CABINS











LIFESTYLE



# LIFE ON DECK

Grayone is an all-around sailing leisure yacht ideal for exclusive getaways, charter and transoceanic adventures. This model boasts a combination of exterior and interior areas easily flowing into one another. A clever bridge deck and superstructure design allow for a superior level of comfort onboard whereas the generous teak use, high bulwarks and classy lines underscore her modern style with a classic edge. Onboard you'll find yourself in a realm of unparalleled luxury. The yacht's spacious cabins are tastefully designed, with every detail carefully curated to provide comfort and sophistication. The yacht's advanced sailing capabilities make it a joy to navigate, offering an exhilarating experience for seasoned sailors and novices alike. From snorkeling in crystal-clear coves to exploring hidden beaches accessible only by sea, the Sunreef 80 ft opens up a world of exploration.



# WATER TOYS



Castoldi Jet 16 ft Tender  
Seabob (1)  
Jetski Seadoo Spark (1)  
Jetsurf Lampuga (1)  
Fishing Rod  
Wakeboard (1)  
Snorkel gear  
SUP (2)  
Airstream (2)  
Inflatable for Kids  
Snorkeling equipment

# SPECIFICATIONS

Length: 24.38 metres (80')  
Beam: 11.53 metres (37' 10")  
Draft: 4.06 metres (13' 4")  
Number of Guests: 8  
Number of Crew: 5  
Built: 2020  
Refit  
Builder: Sunreef Yachts  
Flag: Maltese  
Hull Construction: GRP  
Hull Configuration: Multi hull

## ACCOMMODATION

Number of guests: 12  
Number of cabins: 6  
Cabin configuration: 4 Double Cabins, 2 Twin Cabins  
Bed configuration: 4 Double Beds, 4 Single Beds

## ENGINES

2x John Deere 280HP - Diesel  
Normal cruise 80 L/Hrs  
Fast Cruise 100 L/Hrs  
  
Generators:  
2x Kopher 20KW, automatic parallel running

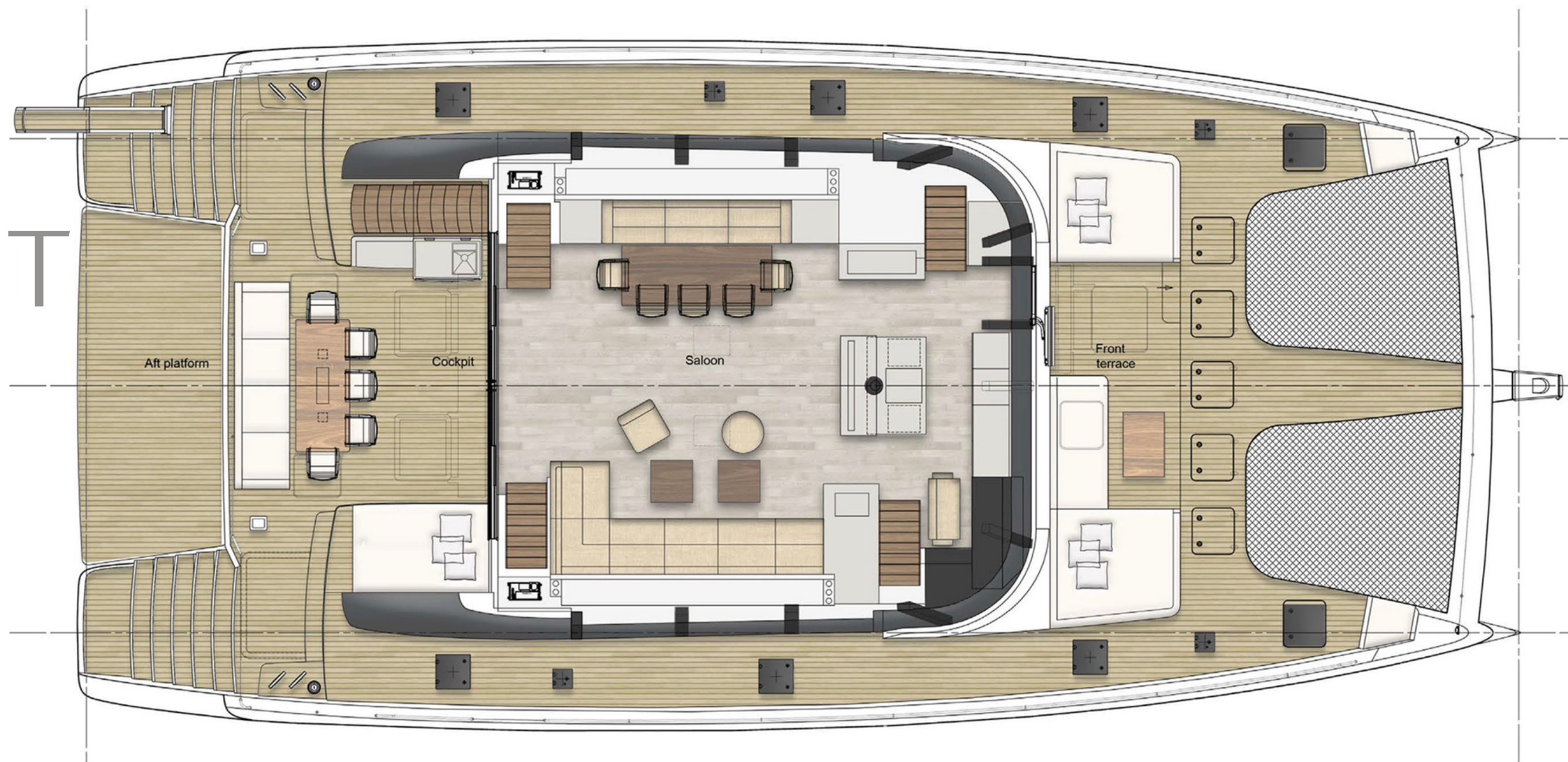
## EQUIPMENT

TV in each cabin  
5.1 Surround in the saloon powered by Yamaha  
Two Speakers on the Bow  
Two Speakers on flybridge  
Two Speakers on stern  
Karaoke system  
Wine Cooler (2)  
PS 5  
Board games  
Shampoo, Conditioner, Shower Gel, Body Lotion (L'occitane)  
Fitness trail elliptical trainer  
Yoga Mats  
Yoga Ball  
6 x Gym weights  
4 x TRX bungee bands equipment  
Air conditioning, WiFi connection on board

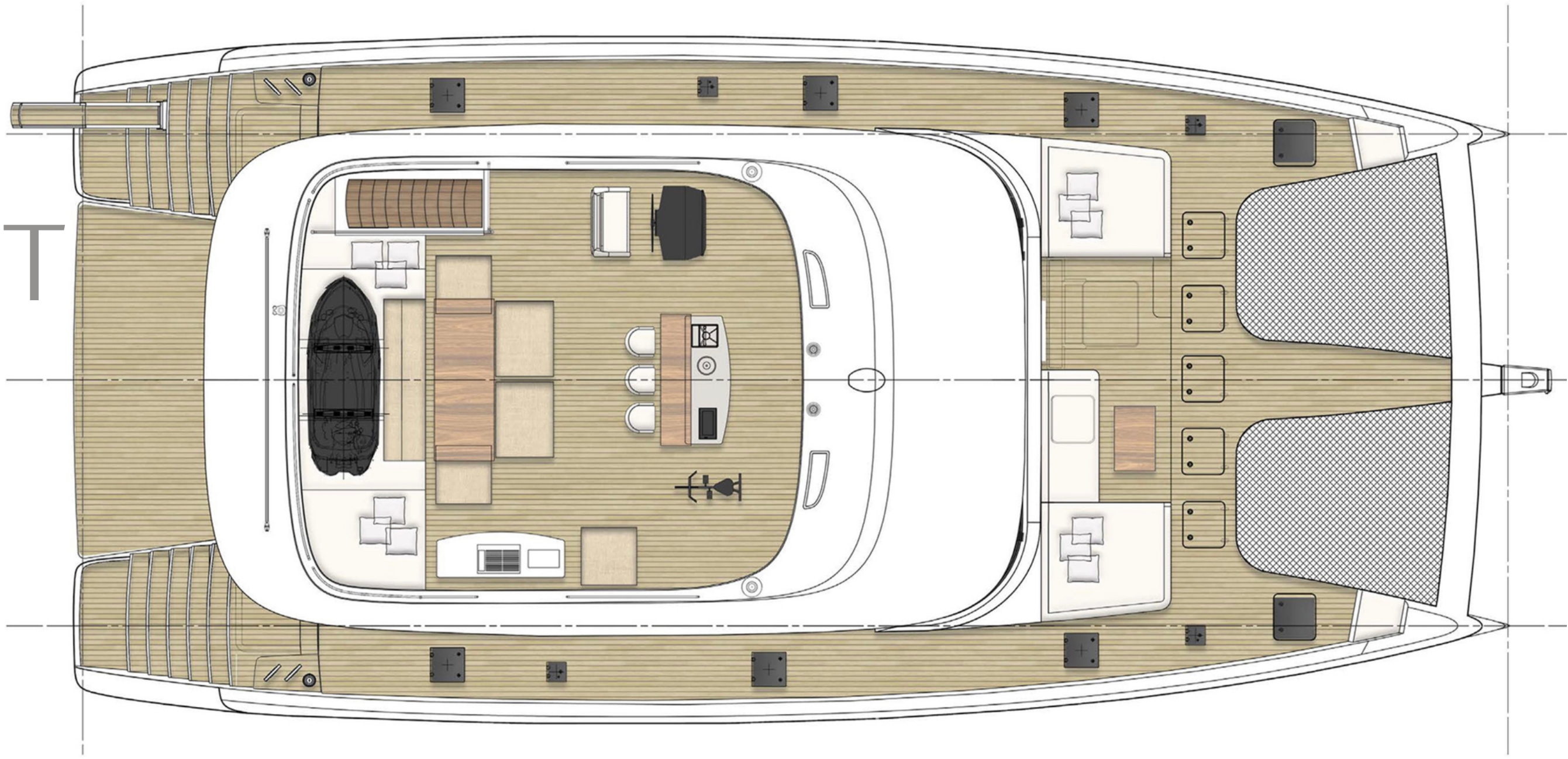
# LAYOUT



# LAYOUT



# LAYOUT





—GRAYONE—

S/Y GRAYONE